

FEATURES

- High CRI LED optimized towards TM30
- ENEC approved drivers
- Max. 3 downlights can be connected to 1 driver
- Easy installation by Plug & Play system available

SPRINGS

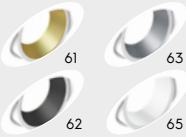
Standard with CS spring (concrete/gyproc). Also available as above with WS spring (gyproc/metal).

Reflector
L4CS 24° / 60°

Diffuser
L4CS 80°

COLOURS

Available colours:



Nr	Housing	Inside ring
RAL 9016		
XX=61	Matt white	Gold
XX=63	Matt white	Silver
XX=62	Matt white	Black
XX=65	Matt white	White



Nr	Housing	Inside ring
RAL 9005		
XX=71	Matt black	Gold
XX=74	Matt black	Silver
XX=72	Matt black	Black
XX=76	Matt black	White

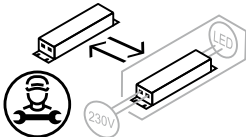
Strada 90 L4CS

Fixed

SPECIFICATIONS

Beam angle (FWHM)	24° / 60° / 80°
Fixture material	Housing: Die cast aluminium / Reflector glass: Polycarbonate
Environment	Indoor
IK rate	IK03
Operating temperature (Ta)	-20°C / +45°C
Safety marks	EN60598 / EN62031 / EN62471
EMC compliance	EN55015
Colour consistency (SDCM)	MacAdam step 3
Warranty	7 years * (within the European Union and the countries of the Free Trade Association for products delivered after 1 May 2015)
Safety class	III
Energy class	To be determined

This luminaire contains built-in LED lamps. There are no exchangeable parts inside the luminaire. EU 874/2012



STRADA 90 L4CS

Max 800 mA



ITEM SPECIFICATIONS

Description	Item code CS	WS	Input	Vf	W	Lm	Lm/W	CRI (typ.)	UGR	Pf	Ripple	Inrush current	B-16A Fuse	Safety class
Strada 90 L4CS max 1750Lm 2700K 24°	857C03XX4KE2	857C03XX9KE2	max 800mA	17,6	14,1	1750	124	93	24.3	x	x	x	x	III
Strada 90 L4CS max 1850Lm 3000K 24°	857D03XX4KE2	857D03XX9KE2	max 800mA	17,6	14,1	1850	131	93	24.5	x	x	x	x	III
Strada 90 L4CS max 1975Lm 4000K 24°	857F03XX4KE2	857F03XX9KE2	max 800mA	17,6	14,1	1975	140	93	24.7	x	x	x	x	III
Strada 90 L4CS max 1750Lm 2700K 60°	857C03XX4LE2	857C03XX9LE2	max 800mA	17,6	14,1	1750	124	93	25.2	x	x	x	x	III
Strada 90 L4CS max 1850Lm 3000K 60°	857D03XX4LE2	857D03XX9LE2	max 800mA	17,6	14,1	1850	131	93	25.3	x	x	x	x	III
Strada 90 L4CS max 1975Lm 4000K 60°	857F03XX4LE2	857F03XX9LE2	max 800mA	17,6	14,1	1975	140	93	25.6	x	x	x	x	III
Strada 90 L4CS max 1750Lm 2700K 80°	857C03XX4ME2	857C03XX9ME2	max 800mA	17,6	14,1	1750	124	93	29.6	x	x	x	x	III
Strada 90 L4CS max 1850Lm 3000K 80°	857D03XX4ME2	857D03XX9ME2	max 800mA	17,6	14,1	1850	131	93	29.8	x	x	x	x	III
Strada 90 L4CS max 1975Lm 4000K 80°	857F03XX4ME2	857F03XX9ME2	max 800mA	17,6	14,1	1975	140	93	30.0	x	x	x	x	III

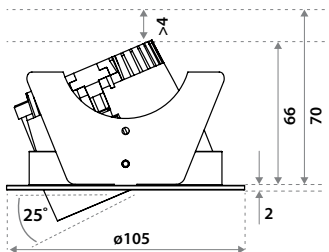
Description	Energy class	Weight	Dimensions carton	Quantity per carton	Expected Lifetime			Reported Lifetime*		
					L70B10	L80B10	L90B10	L70B10	L80B10	L90B10
Strada 90 L4CS max 1750Lm 2700K		250 gr	105x105x105 mm	42 pcs	>465.000 hrs	>274.000 hrs	103.000 hrs	>105.000 hrs	>105.000 hrs	103.000 hrs
Strada 90 L4CS max 1850Lm 3000K		250 gr	105x105x105 mm	42 pcs	>465.000 hrs	>274.000 hrs	103.000 hrs	>105.000 hrs	>105.000 hrs	103.000 hrs
Strada 90 L4CS max 1975Lm 4000K		250 gr	105x105x105 mm	42 pcs	>465.000 hrs	>274.000 hrs	103.000 hrs	>105.000 hrs	>105.000 hrs	103.000 hrs

All values are measured at 230V (+/- 7%). *Based on 19.000hrs of LM80 testing at 180mA per die and a Tc85°C.

CHOOSE YOUR LV LUMEN OUTPUT

	mA	3 spots		Lumen Output			Lumen / Watt			Advised PSU	
		Vf	W	2700K	3000K	4000K	2700K	3000K	4000K	No dim	Dali
Special request	350	49,5	17,3	800	850	900	139	147	156	127568	126566
Standard	500	50,4	25,2	1125	1200	1275	134	143	152	127568	126566
Special request	650	51,6	33,5	1400	1500	1600	125	134	143	127568	126566
Standard	800	52,8	42,2	1750	1850	1975	124	131	140	127568	126566

DIMENSIONS



CUT OUT



Using CS springs: Ø 90 mm.
Thickness ceiling 5-70 mm
& recess depth 70 mm.



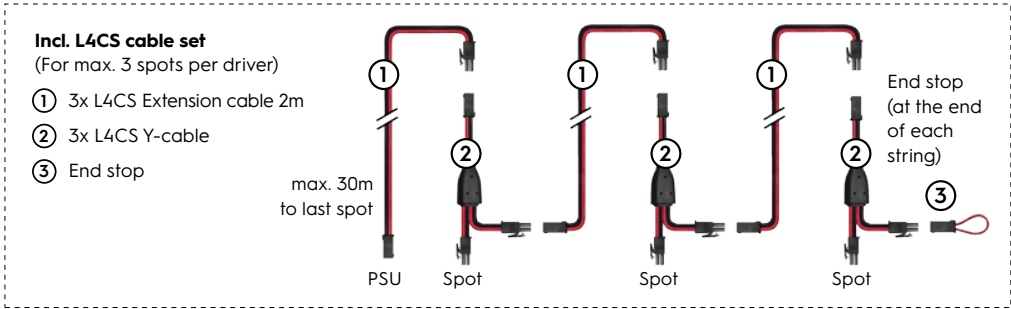
Using WS springs: Ø 92 mm.
Thickness ceiling 1-50 mm
& recess depth 70 mm.

PSU (INCL. L4CS CABLE SET 3L)



PSU 78W No dim TCI 127568
359x30x21 mm
Exp. lifespan 100.000 hrs
Incl. cable set 3L and wire grip

PSU 78W Dali TCI 126566
359x30x21 mm
Exp. lifespan 100.000 hrs
Incl. cable set 3L and wire grip

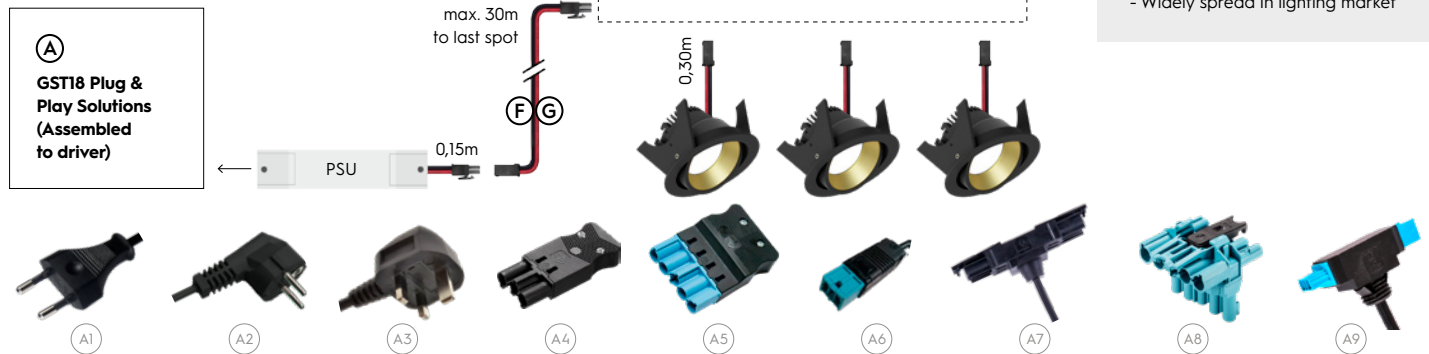


Item specifications (PSU)

Driver types	Supplier name	Item code	Input	W	Max mA	Max Vf	Pf	Eff.	Inrush current	B-16A Fuse
PSU 78W 500mA No dim TCI + L4CS cable set 3L	127568	05T103MLMA03	220-240V AC/DC	78W	350-1400	56	0.95	>91%	10A200µS	30 pcs
PSU 78W 500mA Dali TCI + L4CS cable set 3L	126566	05S803MLMA03	220-240V AC/DC	78W	350-1400	56	0.95	>91%	10A200µS	30 pcs
PSU 78W 800mA No dim TCI + L4CS cable set 3L	127568	05L703MLMA03	220-240V AC/DC	78W	350-1400	56	0.95	>91%	10A200µS	30 pcs
PSU 78W 800mA Dali TCI + L4CS cable set 3L	126566	05L903MLMA03	220-240V AC/DC	78W	350-1400	56	0.95	>91%	10A200µS	30 pcs

All values are measured at 230V (+/- 7%).

PLUG & PLAY CABLE SYSTEM 3/5P



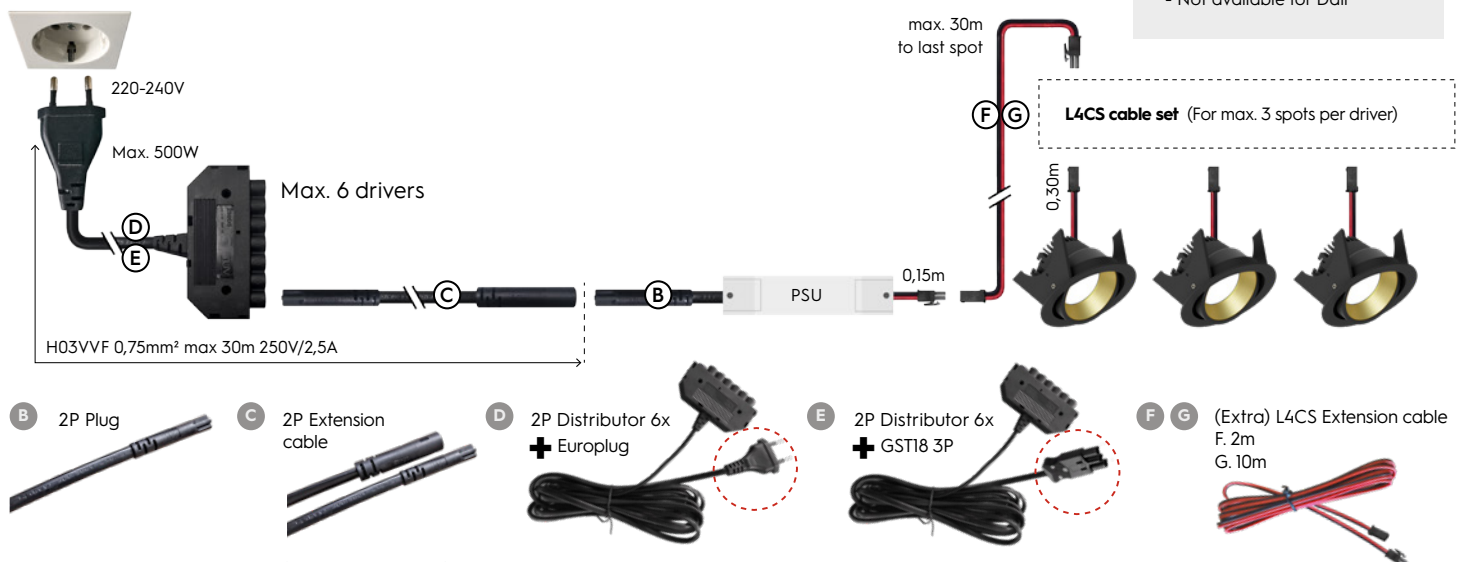
Item specifications (accessories)

Description	Class	Length	Item code
(A1) Euro plug incl. cable	II	2.0 m	015203BL1200
(A2) Schuko plug incl. cable	I	1.5 m	1C5203BLA000
(A3) UK plug incl. cable	II	2.0 m	0A5203BL1200
(A4) 3P GST18 male incl. cable 2x0.75mm ²	II	0.3 m	455203BL0000
(A4) 3P GST18 male incl. cable 2x0.75mm ²	II	3.0 m	455203BL1500
(A4) 3P GST18 male incl. cable 3x0.75mm ²	I	0.3 m	4A5203BL0000
(A4) 3P GST18 male incl. cable 3x0.75mm ²	I	3.0 m	4A5203BL1500
(A5) 5P GST18 male 1-10V/Dali incl. cable 4x0.75mm ²	II	0.3 m	655203BL0000
(A5) 5P GST18 male 1-10V/Dali incl. cable 4x0.75mm ²	II	3.0 m	655203BL1500

Description	Class	Length	Item code
(A5) 5P GST18 male 1-10V/Dali incl. cable 5x0.75mm ²	I	0.3 m	6A5203BL0000
(A5) 5P GST18 male 1-10V/Dali incl. cable 5x0.75mm ²	I	3.0 m	6A5203BL1500
(A6) BST14i male Dali incl. cable	III	0.5 m	095203BL0000
(A6) BST14i male Dali incl. cable	III	3.0 m	095203BL1500
(A7) 3P GST18 T-splitter male incl. cable	II	0.2 m	459203BL0000
(A7) 3P GST18 T-splitter male incl. cable	I	0.2 m	4A9203BL0000
(A8) 5P GST18 T-splitter male 1-10V/Dali	I / II	x	659203BU0000
(A9) BST14i T-splitter male 1-10V/Dali incl. cable	III	0.2 m	099203BL0000

DISTRIBUTOR SYSTEM 2P*

*Not for Dali.

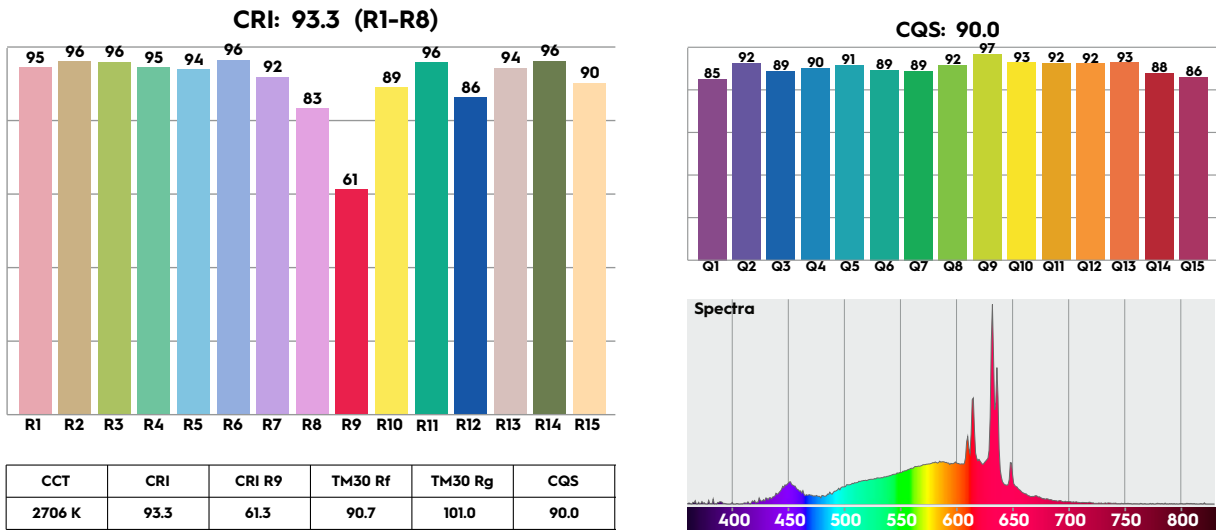


Item specifications (accessories)

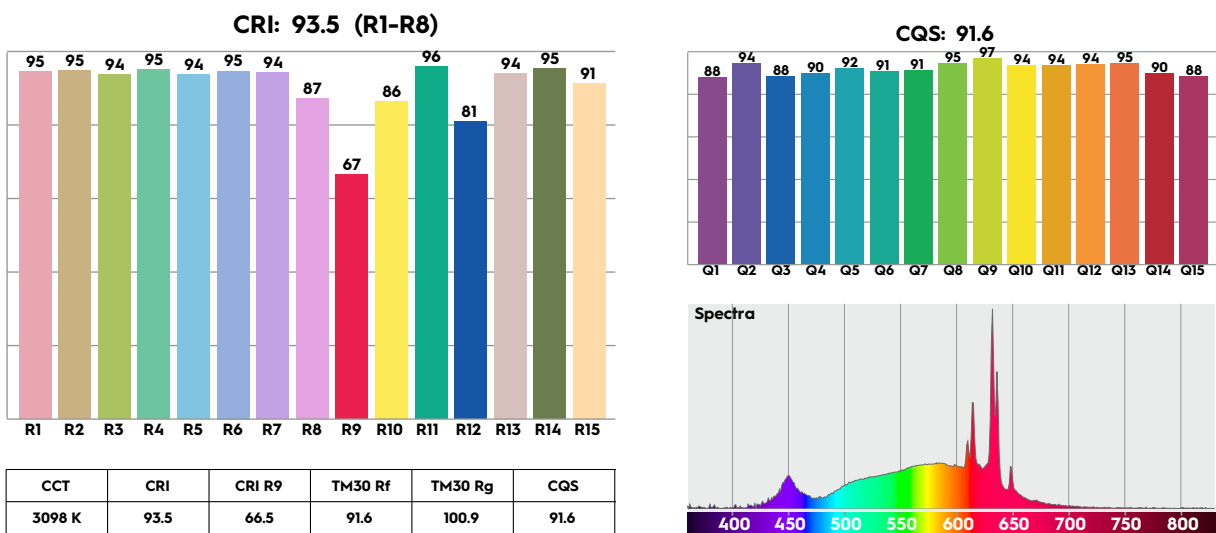
Description	Specification	Class	Length	Item code
(B) 2P Plug 0,15m *	HV 0,15m male (0,75mm ²)	II	0,15 m	6J5203BL1B02
(C) 2P Extension cable	HV Ø7,6mm 2m m/f (0,75mm ²)	II	2.0 m	6F5203BL1202
(D) 2P Distributor 6x + Europlug	HV Ø7,6mm 6x + cable 3m 2,5A	II	3,0 m	665203BL2502
(E) 2P Distributor 6x + GST18 3P	HV Ø7,6mm 6x + cable 3m 2,5A	II	3,0 m	665203BL1502
(F) L4CS Extension cable 2m	LV 2m m/f (0,34mm ²)	II	2,0 m	6B5203BL1202
(G) L4CS Extension cable 10m	LV 10m m/f (0,34mm ²)	II	10,0 m	6E5203BL1202

*Assembled to driver, not for Dali drivers.

2700K



3000K



4000K

